



For Earth, For Life
Kubota

VS

**KUBOTA PENDULUM SPREADERS
VS220/VS400/VS400VITI/
VS600/VS750**

Pendulum spreaders with a working width ranging from 1 to 15m



THE KUBOTA PENDULU



M SPREADER RANGE



EXCELLENT OVERLAP

The Kubota pendulum spreader is the first choice wherever the demand is for maximum accuracy in fertiliser application. Spreading quality and ease of operation of this unique machine are unequalled. The pendulum movement of the spout ensures that the application rate is identical on both sides, resulting in an excellent overlap.

MANUAL, HYDRAULIC OR ELECTRONIC CONTROL

The Kubota VS spreaders are available with manual control, hydraulic remote control from the tractor cabin or electronic control from the tractor cabin with the Varimeter PS-ED II.

KUBOTA MAKES SPRE

KUBOTA VS400



Minimum wind influence on the spreading pattern

The side to side motion of the spreader spout ensures fertiliser is spread left and right, not to the front. This prevents the tractor from getting covered with fertiliser when wind is a factor.

Easy setting of the application rate

The plastic scale allows continuous adjustment of the application rate in kg/hectare, so the risk of spreading errors is minimal. The spreading chart and dial help to determine the desired quantity of fertiliser for every working width and forward speed.



Easy setting of the application rate

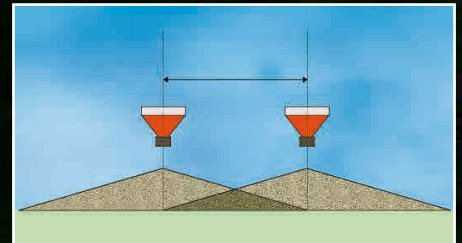
LOADING EASY



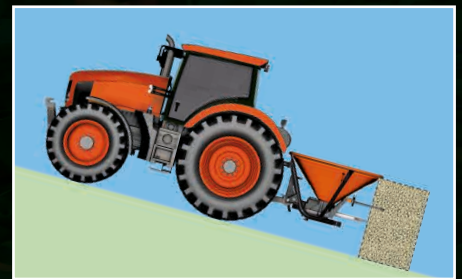
Built for durability

The VS spreaders from Kubota:

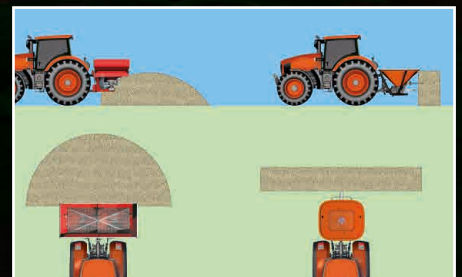
- Metering disc is made from stainless steel
- Optimized frame with no corners where fertiliser can accumulate
- Glass fiber re-enforced polyester or polyethylene hopper which can withstand aggressive types of fertiliser
- The unique Duracoat powder painting system for exceptional corrosion resistance of spreading unit and frame
- Bearings of the spreading unit have easily accessible grease zerks



The cone shaped spreading pattern reaches from tractor wheel track to tractor wheel track giving total overlap of the spreading surface



Accurate spreading also on slopes



Disc spreader

Pendulum spreader

Low filling height

Refilling fertiliser is easy. The hopper can be easily moved under a tipping trailer or silo or filled by hand.



Easy filling

Simple calibration

A specially designed calibration container eliminates the need to remove the spout for calibration.



Easy calibration

Gentle handling of fertiliser

The agitator ensures an even material feed to the spreading unit, so there's no risk of the fertiliser being crushed.



Agitator ensures even feed of the fertiliser

THE BEST CHOICE ON



VS220-330

The VS220/330 is the smallest model in the Kubota pendulum spreader range. This spreader is ideal for use on golf courses and sport fields, as well as many horticulture and municipal applications.

A variety of spouts for different applications and working widths makes it possible to spread fertiliser, seeds, sand, salt, pellets or any other granular product up to 14m. The VS220 has a hardwearing polyethylene hopper with a basic

capacity of 220 litres and an optional extension rim to create 330 litres. The compact design in combination with the short spreading surface provides an optimal spreader for working in small areas.

THE GOLF COURSE



KUBOTA VS220-330



IDEAL TO USE IN ORCH

KUBOTA VS400-500 AND VS400-500VITI



ORCHARDS AND VINEYARDS

VS400-500

With hopper capacities of 400 and 500 litres this spreader is the ideal solution for small farms and special applications. These spreaders are capable of spreading up to 15 metres when a 750/1000 rpm tractor PTO is used.

VS400-500VITI

This special spreader version with only a 115 cm hopper width has been designed for spreading in orchards or vineyards. Available with 400 or 500 litre hopper capacity. An optional spreading spout for band spreading is available.



The VITI models have the hopper rotated to narrow the width, making it ideal for orchards and vineyards.



THE FIRST CHOICE WHE



KUBOTA
VS600-800-1000-750-950-1150-1350-1650

The Kubota pendulum spreader is the first choice wherever the demand is for maximum spreading quality and ease of operation.

The standard working width of the VS spreader range is 1 up to 14 metres. When you increase the PTO speed of the tractor from 540 rpm to 620 rpm the working width can be increased to 15 metres.

VS spreaders feature exact rate control, quick change spouts, low filling heights and easy maintenance.

These versatile spreaders are ideal for vineyards, golf courses and general farm applications.



REVER THE DEMAND IS



VS800



VS1150



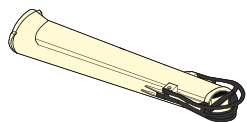
VS500



VS220

A WIDE VARIETY OF APPLICATIONS AND SPREADING SPOUTS

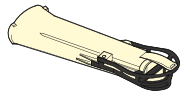
STANDARD SPREADING SPOUT



application:
normal working widths
working width: 9-14m



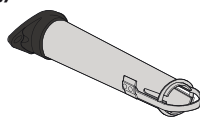
SHORT SPREADING SPOUT



application:
small working widths
working width: 4-8m



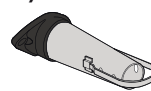
SALT/GRIT SPREADING SPOUT (long)



application:
normal and road building/
salt applications
working width: 6-12m



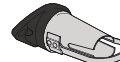
SALT/GRIT SPREADING SPOUT (medium)



application:
road building/salt application
on icy roads and pathways
working width: 5-6m



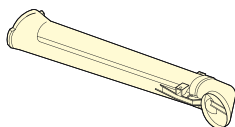
SALT/GRIT SPREADING SPOUT (short)



application:
road building/salt application
on icy roads and pathways
working width: 2-4m



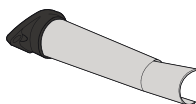
BOUNDARY SPOUT



application:
prevents fertiliser from spreading
into ditches or hedges
working width: 2-6m



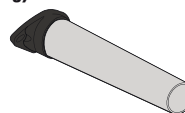
RIGHT SIDE SPREADING SPOUT



application:
fish-farms, spreading on dikes
working width: 4-6m



BAND SPREADING SPOUT (long)



application:
orchards, vineyard
working width: 2-8m



BAND SPREADING SPOUT (short)



application:
pesticides
working width: 0.75-4.5m



OPTIONAL EQUIPMENT

Lighting set

For all VS spreaders an optional lighting set is available. Reflector decals are available for safe transport.



Lighting set and reflector decals

Fine application kit

Shuts two of the three openings of the metering device for the application of small quantities of fine seeds.



Fine application kit

Pivoting wheels

This set of pivoting wheels allows the spreader to be easily moved when detached from the tractor.



Pivoting wheels

Agitator

The agitator ensures an even material feed to the spreading unit. A safety grid protects the agitator.

Grid

A grid fitted inside the hopper prevents lumps of fertiliser penetrating the feed mechanism.

Calibration container

Allows calibration tests to be performed with spout in place.

Hopper extensions

To increase hopper capacity, 100, 110, 200, 300, 600 and 900 litre hopper extensions are available (varies by model).

Hydraulic remote control

Allows the metering disc to be opened and closed from the driver's seat (one single acting control valve required).



Hydraulic remote control



Calibration container



Agitator with safety grid and stainless steel insert

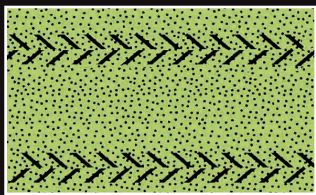


Border spreading plate

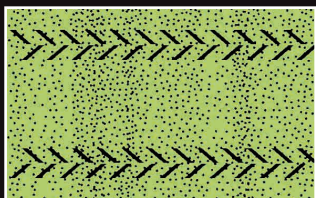
This plate prevents the fertiliser from being spread beyond the field boundary and can be folded from working into transport position from the driver's seat.

Varimeter PS-ED II on-board computer

The Varimeter on-board computer allows the metering disc to be adjusted from the tractor cabin. Forward speed is continuously checked by a wheel sensor or by radar and transmitted to the Varimeter system which in turn ensures a constant application rate whatever the forward speed. The consequence is an absolutely uniform spreading pattern in the direction of travel. The quantity of fertiliser can be increased or decreased at any time during work.



Spreading pattern with PS-ED II



Spreading pattern without PS-ED II



Varimeter PS-ED II

Tramline cylinder

Using the tramline cylinder the spreader is inclined, allowing spreading up to the border of the field.



Hopper cover



Tramline cylinder

Hopper cover

Protects the fertiliser from moisture and dirt. Hopper cover can be easily folded for filling.

SPREADER COMPETENCE CENTRE



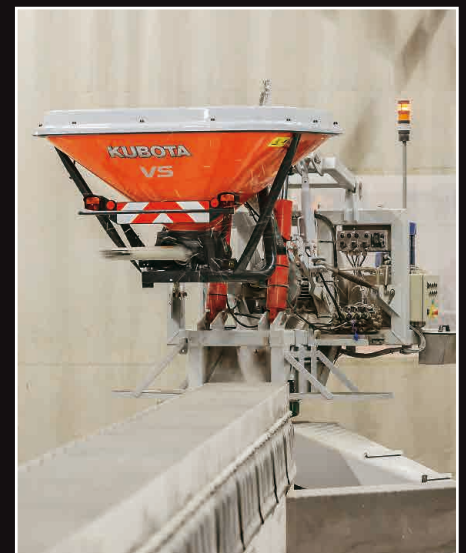
Kubota spreaders are reliable, easy to operate and have outstanding accuracy.

A fertiliser spreader can only be set accurately for rate and overlap using the settings provided by the manufacturer.

The Spreader Competence Centre is now using the most modern technology available, allowing the measurement of complete overlap patterns in 3D. Instead of only measuring the spreading pattern in one line corresponding to the working width, this new technology creates a full pattern showing a complete 3D spreading profile of the fertiliser.

The 3D spread pattern is achieved using a spreader which is mounted on the test rig which rotates the machine through 280°. Continuous measurement at a frequency of 5 HZ over the 80 collecting trays, which are all individually equipped with weigh cells, provide the ultimate in testing accuracy. A single test run provides more than 30 000 measurements! The result is a very precise spread

pattern analysis with a high degree of predictability for setting changes to suit different widths and application rates. This allows faster testing of the various types of fertiliser, results in using less fertiliser; and improves quality for better protection of our environment. The 60m long test hall has underfloor heating; maintains the humidity at 60% (allowing testing throughout the year); and can accommodate testing of working widths of more than 54 metres.



Addresses | E-mail | Kubota

For Earth, For Life
Kubota

English (automatic)

DS/VS Kubota spreading charts

KUBOTA DS

KUBOTA VS

Fertiliser spreading is a task that requires a great deal of accuracy in the basic set up of the machine. It is essential that the operator and trailer are set up correctly to optimise the efficient usage and benefits of animal inputs. The information within this website will only give a general idea of correct and accurate settings for your Kubota tractor spreader.

Spreading charts

Exact advice for each Kubota spreader at any spreading width, application rate, driving speed.

Direct access to most recent test results at www.kubotaspreadingcharts.com or download the spreading charts Application from the App Store or Google Play Store.

TECHNICAL SPECIFICATIONS

VS models	220*	330*	400*	500*	400 VITI*	500 VITI*	600*	800*	1000*	750**	950**	1150**	1350**	1650**
Basic unit		220		400		400 VITI		600	600		750	750	750	750
1. Technical specifications														
Hopper capacity (l)	220	330	400	500	400	500	600	800	1000	750	950	1150	1350	1650
Hopper width (cm)	106	106	145	145	115	115	175	175	175	175	175	175	175	175
Filling height (cm)	77	99	89	101	89	101	96	106	116	96	106	116	125	141
Weight (kg)	83	85	121	126	121	126	130	155	165	151	158	171	187	184
PTO speed (rpm)	540	540	540	540	540	540	540	540	540	540	540	540	540	540
3-point linkage category (CAT)	1	1	1&2	1&2	1&2	1&2	2	2	2	2	2	2	2	2
2. Controls														
Manual control	○	○	○	○	○	○	○	○	○	○	○	○	○	○
Hydraulic control	○	○	○	○	○	○	○	○	○	○	○	○	○	○
PS-ED II spreading computer	○	○	○	○	○	○	○	○	○	○	○	○	○	○
3. Equipment (factory fitted)														
PTO overload clutch	●	●	●	●	●	●	●	●	●	●	●	●	●	●
Nylon spreading spout (9-15m)	●	●	●	●	●	●	●	●	●	●	●	●	●	●
3. Accessories (also loose available)														
3.1. Spreading spouts														
Nylon spreading spout (4-8m)	○	○	○	○	○	○	○	○	○	○	○	○	○	○
Nylon boundary spreading spout (2-6m)	○	○	○	○	○	○	○	○	○	○	○	○	○	○
Stainless steel spreading spout (2-4m)	○	○	○	○	○	○	○	○	○	○	○	○	○	○
Stainless steel spreading spout (5-6m)	○	○	○	○	○	○	○	○	○	○	○	○	○	○
Stainless steel spreading spout (6-12m)	○	○	○	○	○	○	○	○	○	○	○	○	○	○
Stainless steel right side spreading spout (4-6m)	○	○	○	○	○	○	○	○	○	○	○	○	○	○
Stainless steel band spreading spout (0.75-4.5m)	○	○	○	○	○	○	○	○	○	○	○	○	○	○
Stainless steel band spreading spout (2-8m)	○	○	○	○	○	○	○	○	○	○	○	○	○	○
3.2. Safety equipment														
Reflector decal	○	○	○	○	○	○	○	○	○	○	○	○	○	○
Lighting set	○	○	○	○	○	○	○	○	○	○	○	○	○	○
3.3. Border spreading														
Border spreading plate		-	○	○	-	-	○	○	○	○	○	○	○	○
Tramline kit	-	-	-	-	-	-	○	○	○	○	○	○	○	○
3.4. Other														
Grid	○	○	○	○	○	○	○	○	○	○	○	○	○	○
Agitator (always in combination with grid and insert)	○	○	○	○	-	-	○	○	○	○	○	○	○	○
Stainless steel insert	○	○	○	○	○	○	○	○	○	○	○	○	○	○
Hopper cover	-	○	○	○	○	○	○	○	○	○	○	○	○	○
Key to adjust spreading width	○	○	○	○	○	○	○	○	○	○	○	○	○	○
Fine application kit	○	○	○	○	○	○	○	○	○	○	○	○	○	○
Parking wheels	-	-	-	-	-	-	○	○	○	○	○	○	○	○
3.5. Accessories for PS-ED II														
Calibration container	○	○	○	○	○	○	○	○	○	○	○	○	○	○
Wheel/PTO/start-stop sensor	○	○	○	○	○	○	○	○	○	○	○	○	○	○
Wheel ring 350 or 420 mm	○	○	○	○	○	○	○	○	○	○	○	○	○	○
Battery cable 3 pin	○	○	○	○	○	○	○	○	○	○	○	○	○	○

* Both powders and granules ** Granules only

● Standard ○ Optional

The company reserves the right to change the above specifications without notice. This brochure is for descriptive purpose only. Some of the items pictured in this brochure are optional and not standard equipment. Please consult your local Kubota dealer for warranty, safety or product information. For your safety, Kubota strongly recommend the use of a seat belt in all applications.

©2016 Kverneland Group Nieuw-Vennep BV



KUBOTA AUSTRALIA PTY LTD

25-29 Permas Way, TRUGANNIA Vic, 3029

Freecall: 1800 334 653

Email: sales@kubota.com.au