

QH SERIES QUICK-HITCHES

HITCH
Cat. 1 Subcompact,
Cat. 1, 2

HITCHES



Quick Hitch SYSTEM The True Timesavers.

Our Quick-Hitch Systems fit most Land Pride products and are a real time saver when working on multiple projects. Look for this Quick-Hitch System logo to denote applicable products throughout our product line.

Land Pride's patented QH05 Quick Hitch is specifically engineered for subcompact tractors and speeds implement changes, allowing more time to get chores completed. The QH10 & QH15 are designed for Cat. 1 tractors while the QH20 fits Cat. 2.

	QH05	QH10	QH15	QH20
3-Point Hitch	Cat. 1, Subcompact*	Cat. 1	Cat. 1	Cat. 2
Overall Width (cm)	32-5/8" (81)	32-5/8" (81)	32-5/8" (81)	40" (102)
Overall Height	20-1/4"	21-1/4"	23-1/4"	23-5/8"
Overall Length	6-1/2"	8"	9"	8-7/8"
Weight lbs (kg)	37 (17)	67 (30)	70 (32)	120 (54)
Automatic Lock	Auto Lock with Quick Release			
Top Hook	Stationary		Adjustable	Stationary
Optional	Floating Top Link Attachment			
Colors				

PTO driven implements may need a longer driveline. Please consult our Service & Parts Department for longer profile availability.



An optional link is available for implements that have a floating top link allowing unit to follow the contour on the ground.



QH05

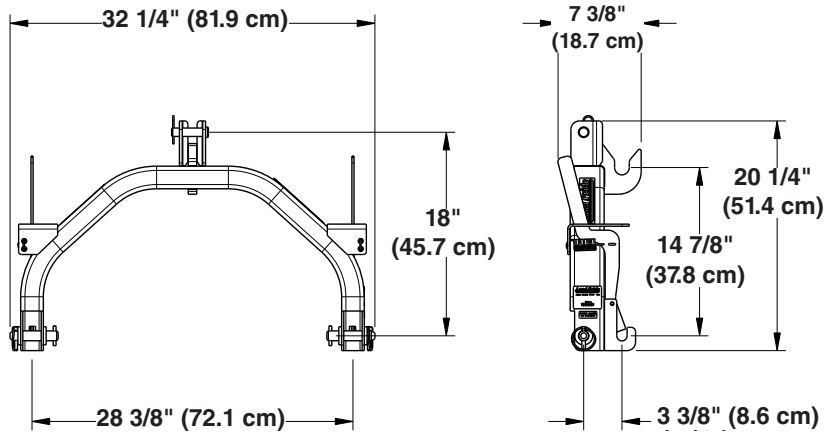
QH10

QH15

QH20

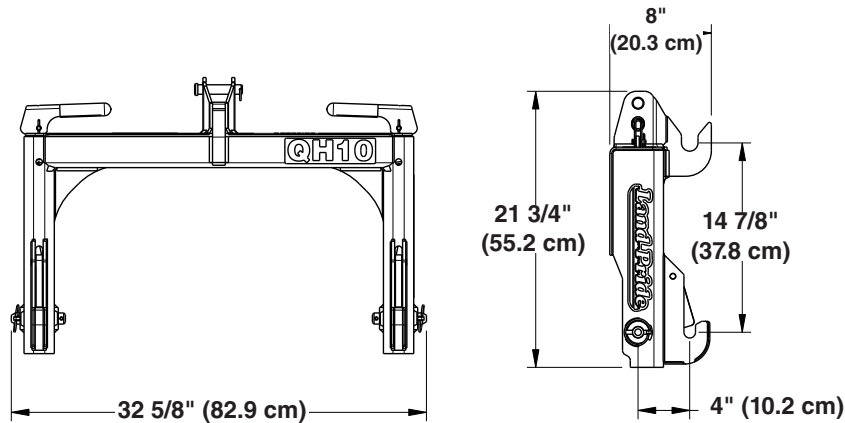
QH05, QH10, QH15, QH20, & QH30 Series

Specifications & Capacities				
Model	QH05	QH10	QH15	QH20
3-Point hitch	Category 1	Category 1	Category 1	Category 2
Maximum lift Capacity	At 24" (61.0 cm) back from implement's lower 3-point hitch pins. Implement hitch must match hitch category listed above.			
	700 lbs (317.5 kg)	2000 lbs (907.2 kg)	2000 lbs (907.2 kg)	3600 lbs (1632.9 kg)
Overall width	32 1/4" (81.9 cm)	32 5/8" (82.9 cm)	32 5/8" (82.9 cm)	40" (1.02 m)
Overall height	20 1/4" (51.4 cm)	21 3/4" (55.2 cm)	23 1/4" (59.1 cm)	23 5/8" (60.0 cm)
Overall length	7 3/8" (18.7 cm)	8" (20.3 cm)	9" (22.9 cm)	8 7/8" (22.5 cm)
Weight without floating top link	37 lbs (16.8 kg)	67 lbs (30.4 kg)	70 lbs (31.8 kg)	120 lbs (54.4 kg)
Top hitch	Stationary	Stationary	Adjustable	Stationary
Hitch pin lock	Automatic on implement's lower 3-point hitch pins			



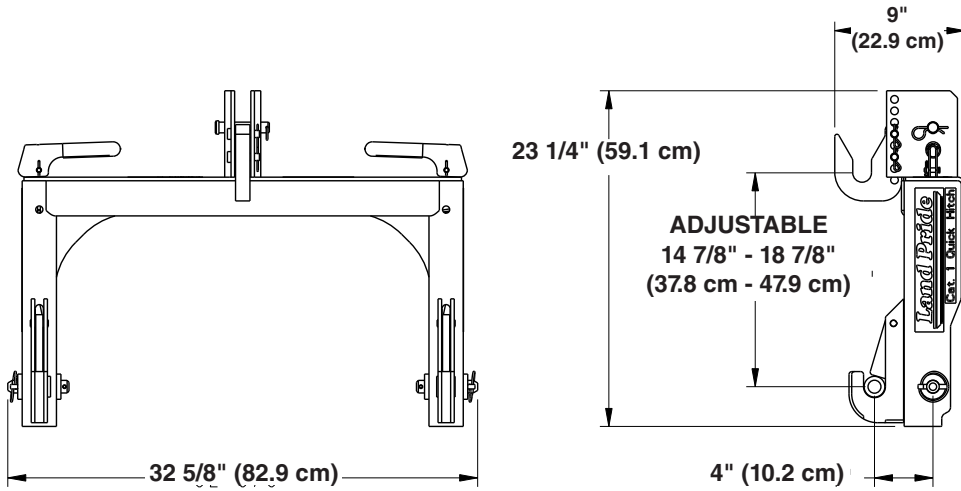
QH05 Quick Hitch
Figure 5-1

37128



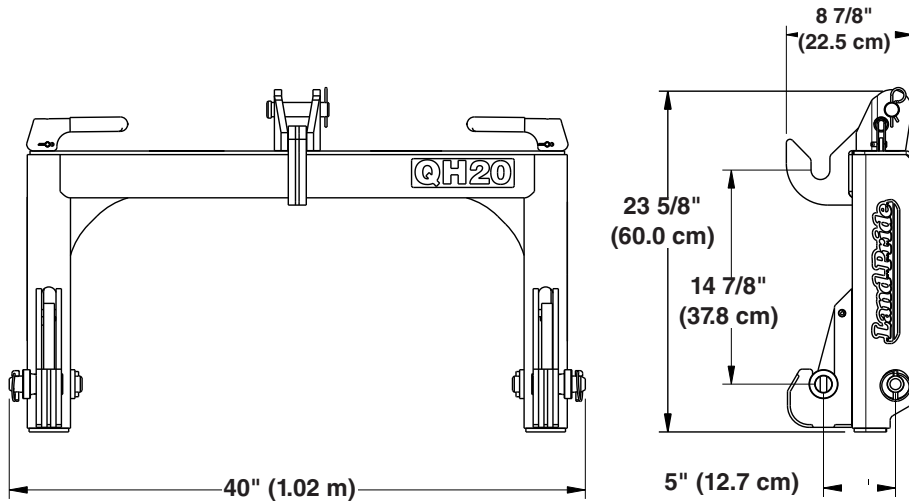
QH10 Quick Hitch
Figure 5-2

70121



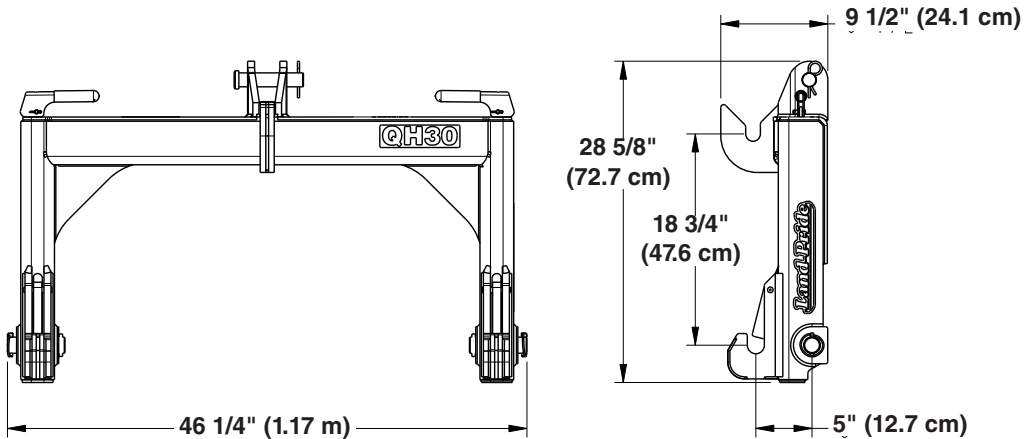
QH15 Quick Hitch
Figure 5-3

26874



QH20 Quick Hitch
Figure 5-4

24879



70315